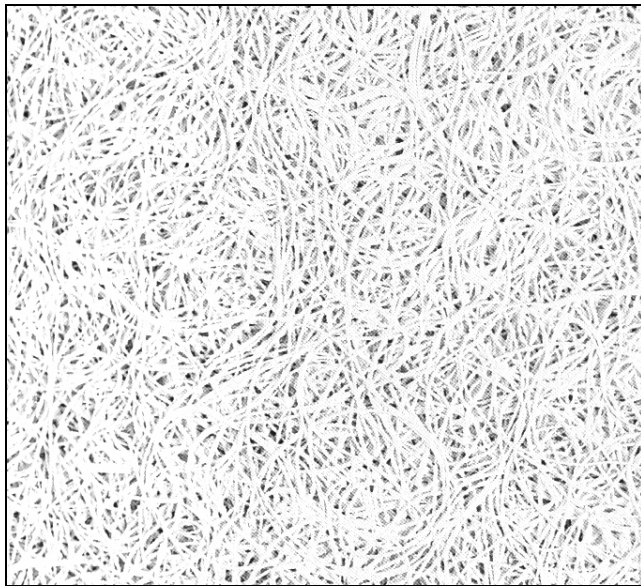


# Tectum™ Acoustic Panels

*Tectum™ Acoustic Panels are an ideal choice where walls and ceilings are subject to abuse and noise is a problem.*



Surface detail of highly durable absorption panels. Available in a wide variety of thicknesses and sizes.

Tectum™ Acoustic Panels combine a unique textured appearance with unusual durability. Features include excellent sound absorption, lightweight structural strength and Class A/1 flame spread rating. The use of Tectum™ is very cost effective for a multitude of interior applications.

Tectum™ Panels are made of aspen wood fibers, bonded with an exclusive hydraulic cement binder. Few, if any other acoustical products can take the repeated abuse that Tectum™ panels can and still retain their good looks and structural integrity.

Tectum™ Acoustic Panels are easy to install on walls with conventional wood or drywall tools. Ceiling installations use standard grid suspension components. The natural or factory painted white panels provide a decorative interior finish. They can be field painted to match colour schemes without losing acoustical efficiency.

## FEATURES

- Reduces noise – NRC up to 1.00.
- Class A/1 Flame Spread Rating.
- Durability – Tough, abuse resistant.
- R-Value – 1.75 / in.
- Can be field painted – for best results use an alkali-stable flat latex base paint spray applied (approx. 300 sq. ft. per gallon).
- Easy to install – Wide variety of uses.
- Economical

*No asbestos is used in Tectum™*

## AVAILABLE SIZES

Panel Type	Thickness (INCHES)	Actual Size (INCHES)
<b>TECTUM WALL PANELS</b>		
<b>Standard Panels</b>	1, 1½, 2	23¾, 31¾ or 47¾ X 72 to 144" in 12" increments
EDGE DETAIL – Long edges bevelled.		
<b>TECTUM CEILING PANELS</b>		
<b>Standard Tiles</b>	1, 1½, 2	23¾ X 23¾ or 47¾
	1½	47¾ X 47¾
EDGE DETAIL – Square edges.		

## INSTALLATION

It is recommended that Tectum™ used as wall panels be installed on wood or metal furring strips. Adding fiberglass between the furring strips will improve overall performance. All exposed panel edges should be beveled for best appearance.

