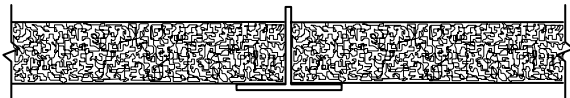


TECTUM™ ACOUSTICAL PERFORMANCE

PANEL TYPE	SOUND ABSORPTION COEFFICIENTS						NRC	MOUNTING
	125	250	500	1000	2000	4000		
TECTUM™ CEILING TILE								
1" X 24" X 24" Lay-in	.40	.42	.35	.48	.60	.93	.45	E-400
1½" X 24" X 24" Lay-in	.44	.43	.33	.49	.66	.77	.50	E-400
2" X 24" X 24" Lay-in	.48	.46	.36	.55	.74	.79	.55	E-400
TECTUM™ WALL PANELS								
1"	.06	.13	.24	.45	.82	.64	.40	A
1"	.07	.15	.36	.65	.71	.81	.45	D-20
1"	.16	.43	1.00	1.05	.79	.98	.80	C-20
1"	.32	.70	1.09	.93	.76	.94	.85	C-40
1½"	.07	.22	.48	.82	.64	.96	.55	A
1½"	.15	.26	.62	.83	.70	.91	.60	D-20
1½"	.24	.57	1.17	.87	.93	.87	.90	C-20
1½"	.40	.84	1.18	.84	.94	.88	.95	C-40
2"	.15	.26	.62	.94	.64	.92	.60	A
2"	.15	.36	.74	.82	.82	.92	.70	D-20
2"	.42	.89	1.19	.85	1.08	.94	1.00	C-40

MOUNTINGS



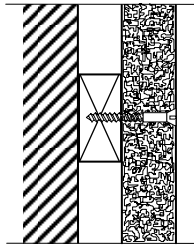
E-400

Lay-in ceiling tiles installed in standard grid suspension components.



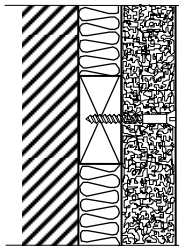
A

Tectum™ panel installed directly against wall.



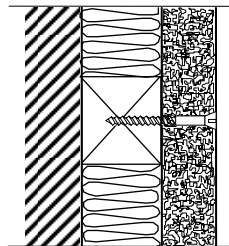
D-20

Tectum™ panel installed on 3/4" furring strips.



C-20

Tectum™ panel installed on 3/4" furring strips with 1" fiberglass.



C-40

Tectum™ panel installed on 1-1/2" furring strips with 2-1/2" noise batts.

LIMITATIONS

Tectum™ acoustical panels can be used over swimming pools and in open construction such as breeze-ways and open garages. However, they should not be installed where they will come in direct contact with water or condensation.

One-inch thick panels over 23¾" X 47¾" size should not be used where the relative humidity will exceed 85%. Panels thicker than 1" are not restricted by humidity conditions.

TOLERANCES

Tectum™ Ceiling and Wall Panels width and length, plus zero minus 1/8", over 4' lengths is plus 1/8" to 1/4". Thickness is nominal, plus zero minus 3/32". Panels that are to be butted must be beveled and may require field fitting.

WILREP LTD.

1515 Matheson Blvd. E., Unit C-10
 Mississauga, Ontario, Canada L4W 2P5
Tel. (905)625-8944 Fax (905)625-7142
 www.wilrep.com e-mail: wilrep@idirect.com